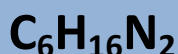




Product Specification

n,n,n,n-TETRAMETHYL ETHYLENE DIAMINE FOR ELECTROPHORESIS/MOLECULAR BIOLOGY

PRODUCT CODE	988500
SYNONYMS	(TEMED)
C.I. NO.	--
CASR NO.	(110-18-9)
ATOMIC OR MOLECULAR FORMULA	C ₆ H ₁₆ N ₂
ATOMIC OR MOLECULAR WEIGHT	116.21
PROPERTIES	--



PARAMETER	LIMIT
Description	Clear and colourless liquid with ammonical odour.
Solubility	Miscible with water in proportion.
Minimum assay (GC)	99.0%
Wt. per ml (20°C)	About 0.774 g
Refractive index n_D^{20}	About 1.410

MAXIMUM LIMIT OF IMPURITIES

Water	0.5%
Sulphated ash	0.005%
DNase, RNase, Protease	None detected

Note(s) : Assay (if applicable) method mentioned.

DANGER

Hazard statements : Highly flammable liquid and vapour. Toxic if swallowed. Harmful if inhaled. May cause allergic or asthmatic symptoms or breathing difficulties if inhaled. May cause allergic skin reaction. Causes severe skin burns and eye damage.

Precautionary statements

Prevention: Wash hands thoroughly after handling. Do not breathe dust or mist. Do not eat, drink or smoke when using this product. In case of inadequate ventilation wear respiratory protection. Ground/bond container and receiving equipment. Avoid breathing dust/fume/gas/mist/vapours/spray. Use only outdoors or in a well ventilated area. Wash thoroughly after handling. Wear protective gloves/clothing and eye/face protection. Wear protective gloves and eye/face protection. Contaminated clothing should not be allowed out of the workplace. Keep container tightly closed. Use explosion-proof electrical /ventilating/lighting/ equipment. Keep away from heat/sparks/open flame - No smoking. Use only non-sparking tools. Take precautionary measures against static discharge.

Response: If skin irritation or rash occurs, seek medical advice/attention. If experiencing respiratory symptoms call a POISON CENTER or doctor/physician. IF SWALLOWED: Rinse mouth. Do NOT induce vomiting. IF INHALED: If breathing is difficult, remove to fresh air and keep at rest in a position comfortable for breathing. IF IN EYES: Rinse cautiously with water for several minutes. Remove contact lenses, if present and easy to do. Continue rinsing. Wash contaminated clothing before reuse. If on skin or hair: remove/take off immediately all contaminated clothing. Rinse with water/shower. IF SWALLOWED: Immediately call a POISON CENTER or doctor/physician. Specific treatment: refer to Label or MSDS. Call a POISON CENTER or doctor/physician if you feel unwell. IF INHALED: Remove to fresh air and keep at rest in a position comfortable for breathing. IF ON SKIN: Gently wash with plenty of soap and water. Immediately call a POISON CENTER or doctor/physician

IMDG Code : 3/II
UN No. : 2372
IATA : 3

Disposal: The chemical should be burnt in a chemical incinerator equipped with burner and scrubber. If the volumes are larger than 500ml and no incinerator and site of evaporation is not available then transfer the waste chemical to waste solvent drum for collection by specialist disposal company.

Hazard Pictogram(s) :-



Flammable



Acute toxicity



Corrosive to metals