

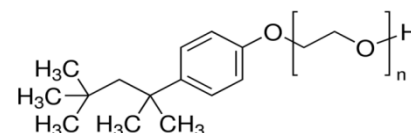


Product Specification

cdhfinechemical.com

CRITONX-100 FOR MOLECULAR BIOLOGY

PRODUCT CODE	923500
SYNONYMS	--
C.I. NO.	--
CASR NO.	(9002-93-1)
ATOMIC OR MOLECULAR FORMULA	C₃₄H₆₂O₁₁
ATOMIC OR MOLECULAR WEIGHT	646.87
PROPERTIES	--



PARAMETER LIMIT

Description	A clear liquid not more than 10 Hazen units in colour.
Solubility	Miscible with water and alcohol.
Minimum assay	98 - 102%
Wt. per ml at 20°C	1.064 – 1.067 g

MAXIMUM LIMIT OF IMPURITIES

Water	0.2%
Chloride (Cl)	0.005%
Sulphate (SO ₄)	0.005%
Sodium (Na)	0.1%
Heavy metals (as Pb)	0.0005%
Iron (Fe)	0.0005%
Potassium (K)	0.05%
Endonuclease	None detected.
Exonuclease	None detected.
Phosphatases, Protease	None detected

Note(s) : Assay (if applicable) method mentioned.

WARNING

Hazard statements: Harmful if inhaled. May be harmful if swallowed. Causes skin irritation. Causes serious eye irritation. Very toxic to aquatic life with long lasting effects.

Precautionary statements

Prevention: Avoid breathing dust/fume/gas/mist/vapours/spray. Wash thoroughly after handling. Wash hands thoroughly after handling. Use only outdoors or in a well ventilated area.

Response: IF INHALED: Remove to fresh air and keep at rest in a position comfortable for breathing. Wear eye/face protection. If eye irritation persists, get medical advice/attention. IF IN EYES: Rinse cautiously with water for several minutes. Remove contact lenses, if present and easy to do. Continue rinsing. If skin irritation occurs, seek medical advice/attention. Call a POISON CENTER or doctor/physician if you feel unwell. IF SWALLOWED: Call a POISON CENTER or doctor/physician if you feel unwell. Specific treatment: refer to Label or MSDS. IF ON SKIN: Gently wash with plenty of soap and water. Wash/Decontaminate removed clothing before reuse. Remove/Take off immediately all contaminated clothing

Disposal: Dispose of contents and container in accordance with relevant legislation.

IMDG Code : --
UN No. : --
IATA : --

Hazard Pictogram(s) :



GHS07



GHS09

Revised Date 25-03-2017